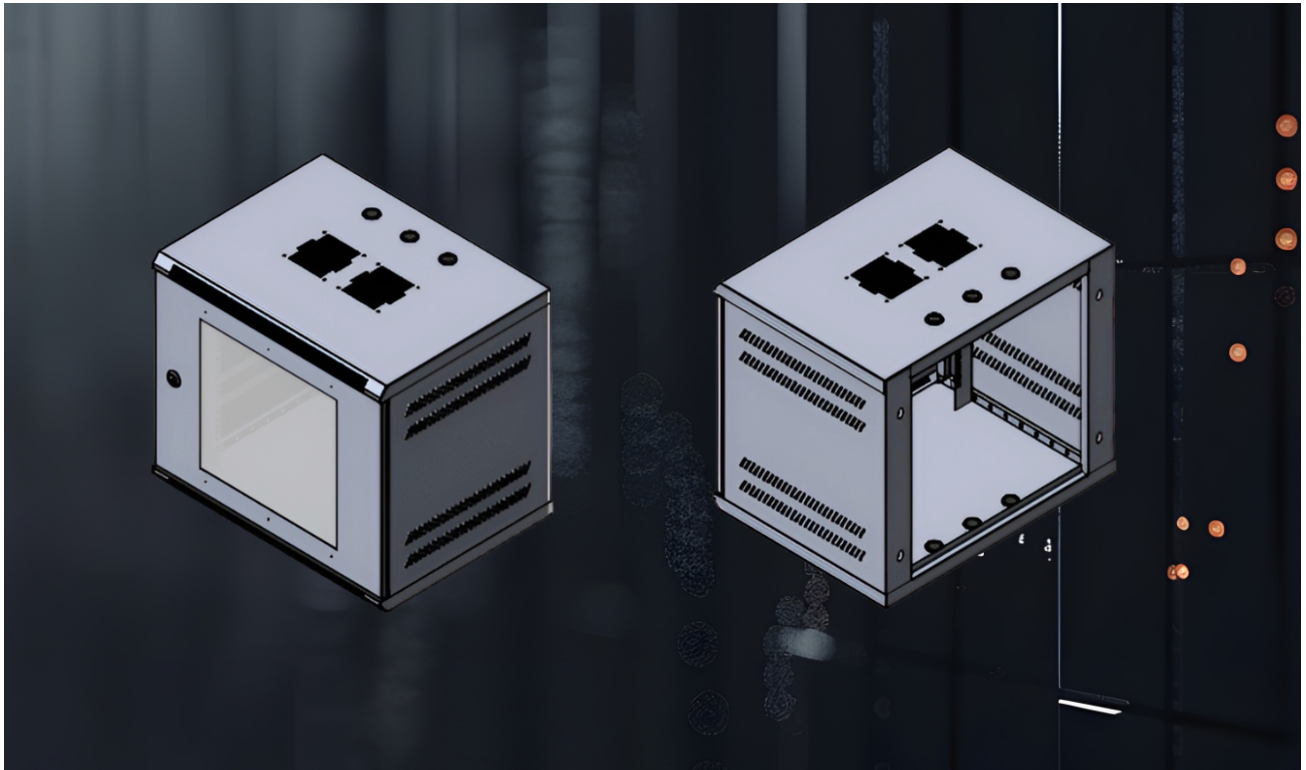


## WALL MOUNT RACKS



### FEATURES

- Heavy-duty Full Bolted / Welded Steel Structure
- Available In RAL 7035 / Customized
- 19" Mounting Rail For Keeping 19" Devices Easily
- Flat Pack Design, Assembles Quickly
- Provision Of Earthing
- For Thermal Management, Vents Are Provided On The Top And Sides
- For Cable Management, Points Are Provided At The Top And Bottom
- Wall Mounting BKT

### AVAILABLE RANGE

Dimension (mm)	Height (mm)	Width (mm)	Depth (mm)
4U	253	600	500
6U	345	600	500
9U	475	600	500
4U	253	550	500
6U	345	550	500
9U	475	550	500
12U	610	550	500
15U	745	550	500